

Southeast Conference  
2/13/18



VALUES IN ACTION  
SEALASKA



# About Sealaska

Sealaska is Alaska Native Corporation established in 1972 under the Alaska Native Claims Settlement Act (ANCSA). We are a Native institution owned by more than 22,000 shareholders whose core Native values guide all that Sealaska does and represent the rich heritage of the Tlingit, Haida and Tsimshian people. We are guided by values to build excellence in our Native enterprise and take action toward our purpose.

## **Sealaska's Purpose:**

Strengthen people, culture and homelands through Values In Action.

# SEALASKA VALUES IN ACTION

## ALASKA NATIVE VALUES

They represent the core cultural values of Sealaska's tribal member shareholders. They guide all that Sealaska does and represent the rich heritage of our people: the Tlingit, Haida and Tsimshian of Southeast Alaska.

### **HAA AANÍ: OUR LAND**

- The basis of our collective identity and culture
- Utilizing the land while protecting for future generations
- Sustainable relationship with our lands
- Sustainable communities

### **HAA SHUKÁ: OUR PAST, PRESENT, FUTURE**

- Our collective identity reaches across generations
- Sanctity of ancestral cultural and sacred sites and heritage
- Social and financial benefits for current and future generations
- Social and environmental responsibility for sustainable operations

### **HAA LATSEEN: OUR STRENGTH, LEADERSHIP**

- Our collective identity gives us strength
- Discipline, resilience, perseverance and adaptability
- Education and training
- Healthy families and communities

### **WOOCH.YAX: BALANCE, RECIPROCITY AND RESPECT**

- Our collective identity relies on spiritual and social balance
- Institutional partnerships and collaboration
- People, tribes and organizations working together (*Wooch.éen*)

## OPERATING GOALS

They are shaped by our Alaska Native values. Achievement of these goals allows us to fulfill our Purpose.

### **OPPORTUNITY:**

**Enriching the lives of Sealaska shareholders and communities**

- Educational Benefits
- Sustainable Economic Development
- Employment Opportunities
- Stable Dividends
- Advocacy

### **PROSPERITY:**

**Business is a vehicle to provide for a better future**

- Business Excellence
- Competitive Advantage
- Diversity Solutions
- Innovation

### **SUSTAINABILITY:**

**Honor the relationship with your resources**

- Responsible Investments
- Healthy Communities
- Building Capacity
- Green Practices
- Silviculture

## SEALASKA PURPOSE

It is built upon the foundation of our Alaska Native values and represents what our operating goals seek to achieve.

### **ANCSA PURPOSE:**

**To forever preserve Alaska Native land, rights and ways of life.**

### **SEALASKA PURPOSE:**

**Strengthen our people, culture and homelands.**

### **SEALASKA WAY:**

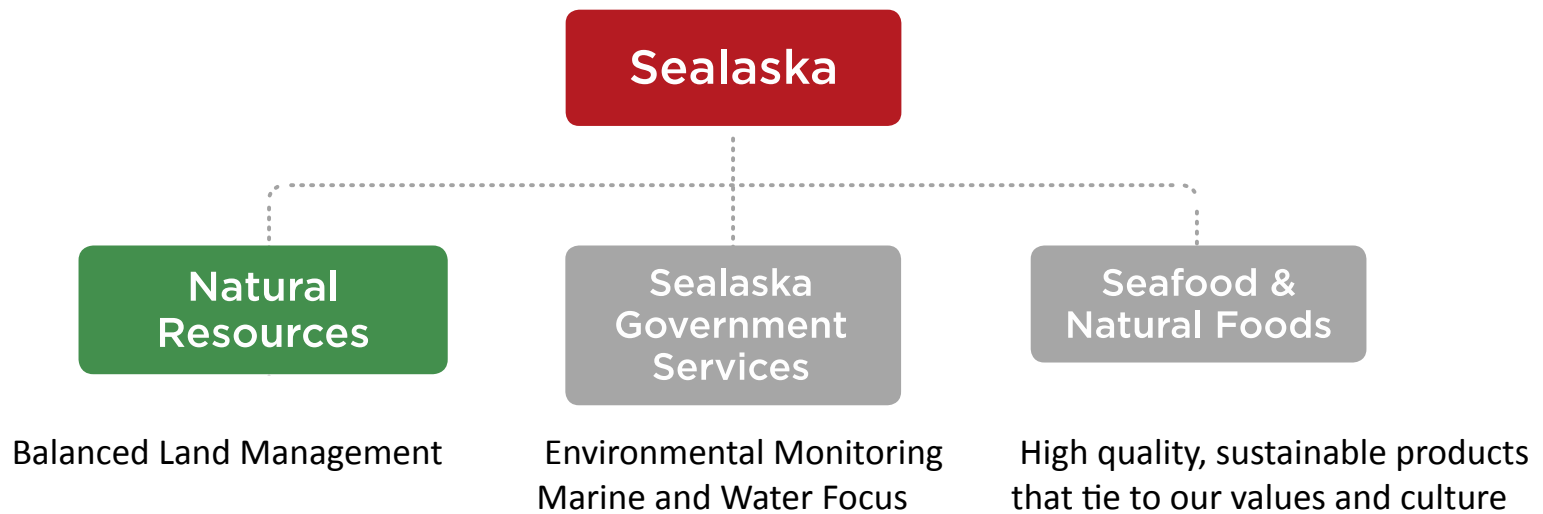
**Utilizing our Values In Action to increase profitability and build Alaska Native capacity.**

## SEALASKA VISION

**An Alaska Native enterprise of excellence built on our cultural values.**

Our Vision inspires us to achieve our Purpose, and unites us to reach the aspirational goals of our people and our communities





*We are coastal people who live from and protect the ocean  
Our values and culture will offer competitive strength and sustainability to our businesses*

# HAA AANI Sealaska's Balanced Land Management.



**362,000 ACRES (1.6% OF SOUTHEAST ALASKA)**

### 35% WORKING FOREST

Our working forests maintain strong habitats for wildlife and have no negative effects on salmon streams.

**SE Economic Development**

- 400 to 600 Jobs
- \$17 Million in Wages

**Community Partnerships**

- Workforce Development
- Road Building and Other Contracts

### 65% MATURE FOREST

- Light and Selective Harvest
- Carbon Sequestration
- Wetland Mitigation
- Tourism
- Community and Cultural Use
- Non Timber Products
  - > Blueberries
  - > Spruce Tips

*Balanced land management with strong stewardship allows for current economic benefit, while maintaining opportunities for future generations (Haa Shuká).*

### LAND OWNERSHIP OF TRADITIONAL HOMELANDS



Percentage of Land Owned (23 Million Acres Total)

<ul style="list-style-type: none"> <li>Tongass National Forest (72.7%)</li> <li>Glacier Bay &amp; Wrangell St. Elias National Parks East of 141st Meridian (23%)</li> <li>Sealaska (1.6%)</li> </ul>	<ul style="list-style-type: none"> <li>Other Native Corporations (1.2%)</li> <li>State of AK &amp; Others (1.1%)</li> <li>Annette Island Reservation (0.4%)</li> </ul>
--	--

### POTENTIAL JOBS

- Administration
- Land technician
- Marketing
- Finance
- Management
- Engineering
- Operations
- Construction
- Stevedoring
- Mechanic

Learn about all Sealaska careers at [Sealaska.com](http://Sealaska.com)

The Haa Aani team's mission is to create the greatest financial, cultural, and community benefit from our Land

# Land Management Update

## • Harvest Update

- Continued work to update inventory assessment leaves us in 40-55 mmbf annual harvest range
- 2017 – Start up year in two new locations and harvested approximately 46 mmbf
- 2018 – Plan to harvest approximately 50 mmbf
  - Plan to use similar harvest areas as 2017
  - Icy Bay Mental Health Trust Timber Sale

## • Silviculture

- We continue to put resources into science-based management of our young growth stands
  - Monitoring re-growth
  - Pre-Commercial Thinning
  - Planting where necessary
  - Pruning
  - Maintaining study plots to continue to gather data

## • Carbon Project

- A Focus on Balanced Land Management has lead us to develop a significant Carbon Project – that is still in Process
  - 165,000 acres that will be in protection for over 100 years, while providing significant financial proceeds to Sealaska:
  - Village Corporations have Carbon project opportunity

## • Policy Priorities

- TLMP Revision – Still have concerns about components of the amendment
- Still have some outstanding land issues created by Cube Cove Land Sale on Admiralty
- Landless
- Alaska Native Veterans Allotments
- Concern over Salmon Initiative

## • Long-term priorities

- Set up viable opportunity for second growth harvest,
  - develop workforce and infrastructure necessary to create cost efficient harvest by collaborating with industry partners
  - look to differentiate product in the market
  - Analyze domestic manufacturing opportunity
- Regional Economic Development tied to land management activity, including mineral development

# THANK YOU

*Gunalchéesh - Háw'aa - T'oyaxsism*

